



# 2009-2010 GMT Quarterly Report for District (or Undistricted) **District LC 11**

GMT: **Mr. Edisson Karnopp**

Location: **BRAZIL**

GMT CA: **3**

## CLUBS

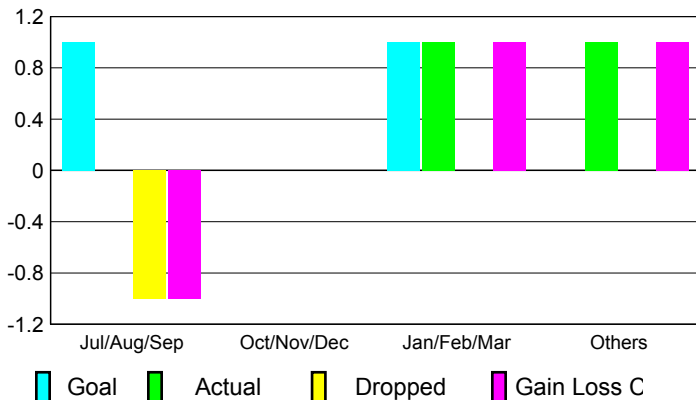
**Club Results**  
2009-2010

**Clubs**  
2008-2009

| Month         | New Club Goal | Actual New Clubs | Actual Dropped Clubs | Gain/Loss of Clubs | Gain/Loss of Clubs |
|---------------|---------------|------------------|----------------------|--------------------|--------------------|
| Jul/Aug/Sep   | 1             | 0                | -1                   | -1                 | 0                  |
| Oct/Nov/Dec   | 0             | 0                | 0                    | 0                  | 0                  |
| Jan/Feb/Mar   | 1             | 1                | 0                    | 1                  | 0                  |
| Apr/May/June  | 0             | 1                | 0                    | 1                  | 1                  |
| <b>Totals</b> | <b>2</b>      | <b>2</b>         | <b>-1</b>            | <b>1</b>           | <b>1</b>           |

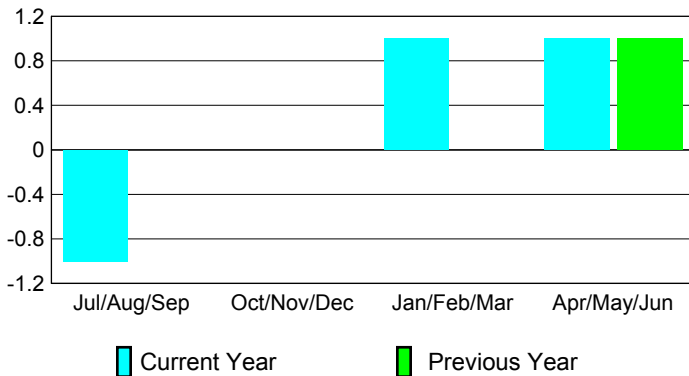
### Club Results 2009-2010

Goal, New, Dropped, Gain/Loss



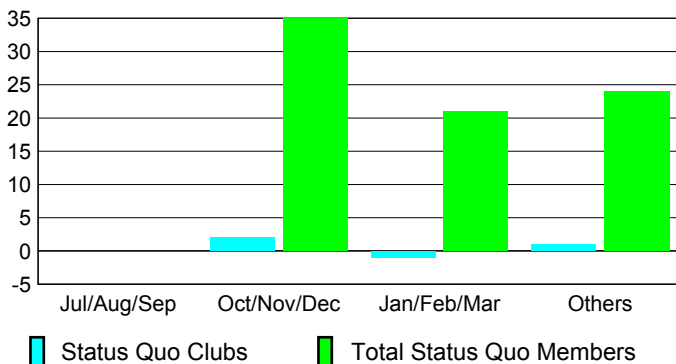
### Comparison of Club Gain/Loss

Current Year Compared to the Previous Year



### YTD Status Quo Clubs 2009-2010

Status Quo Clubs Compared to Status Quo Members



## MEMBERSHIP

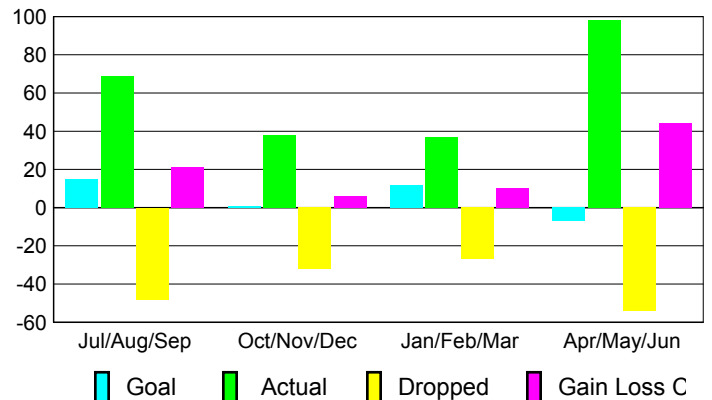
**Membership Results**  
2009-2010

**Membership**  
2008-2009

| Month         | Net Memb Goal | Actual New Memb | Actual Dropped Memb | Gain/Loss of Memb | Gain/Loss of Memb |
|---------------|---------------|-----------------|---------------------|-------------------|-------------------|
| Jul/Aug/Sep   | 15            | 69              | -48                 | 21                | -14               |
| Oct/Nov/Dec   | 1             | 38              | -32                 | 6                 | 36                |
| Jan/Feb/Mar   | 12            | 37              | -27                 | 10                | 6                 |
| Apr/May/June  | -7            | 98              | -54                 | 44                | 25                |
| <b>Totals</b> | <b>21</b>     | <b>242</b>      | <b>-161</b>         | <b>81</b>         | <b>53</b>         |

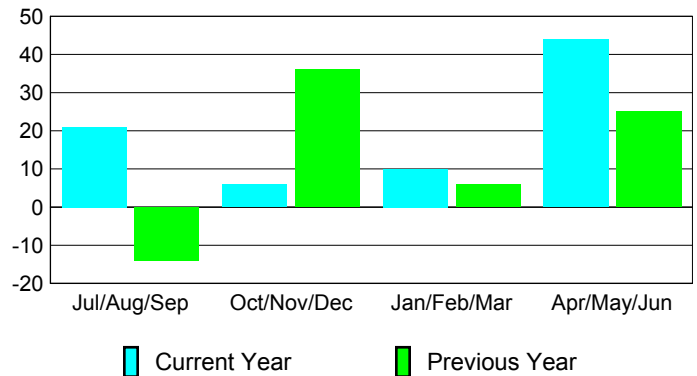
### Membership Results 2009-2010

Goal, New, Dropped, Gain/Loss

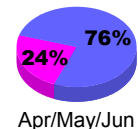
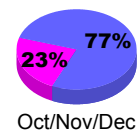
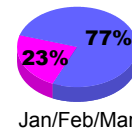
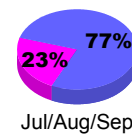


### Comparison of Membership Gain/Loss

Current Year Compared to the Previous Year



### Gender Comparison 2009-2010



Male

Female